



# SAW Components

Data Sheet B1608





SAW Components

B1608

Low-Loss Filter

1472,0 MHz

Data Sheet



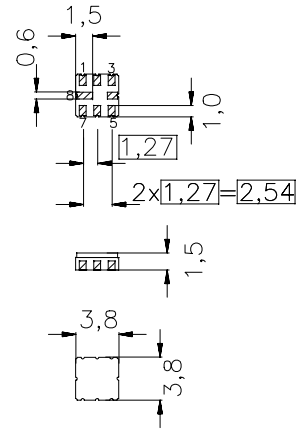
SMD ceramic package **QCC8B**

**Features**

- Low loss RF filter for DAB
- Usable passband 40 MHz
- Unbalanced or balanced operation
- No matching network required for operation at 50 Ω
- Ceramic package for **Surface Mounted Technology (SMT)**

**Terminals**

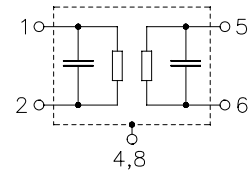
- Ni, gold-plated



Dimensions in mm, approx. weight 0,07 g

**Pin configuration**

- 1 Input ground or balanced input
- 2 Input
- 5 Output ground or balanced output
- 6 Output
- 3,7 To be grounded
- 4,8 Case – ground



Type	Ordering code	Marking and Package according to	Packing according to
B1608	B39152-B1608-Z810	C61157-A7-A46	F61074-V8167-Z000

Electrostatic **S**ensitive **D**evice (**ESD**)

**Maximum ratings**

Operable temperature range	$T$	-20/+85	°C	source and load impedance 50 Ω
Storage temperature range	$T_{stg}$	-40/+85	°C	
DC voltage	$V_{DC}$	0	V	
Source power	$P_S$	0	dBm	



SAW Components

B1608

Low-Loss Filter

1472,0 MHz

Data Sheet



**Characteristics**

Operating temperature range:  $T = -20\text{ °C} \dots +85\text{ °C}$

Terminating source impedance:  $Z_S = 50\ \Omega$

Terminating load impedance:  $Z_L = 50\ \Omega$

		min.	typ.	max.	
<b>Center frequency</b>	$f_c$	—	1472,0	—	MHz
<b>Maximum insertion attenuation</b>	$\alpha_{max}$	—	3,8	4,8	dB
1452,00 ... 1492,00 MHz					
<b>Amplitude ripple in passband (p-p)</b>	$\Delta\alpha$	—	1,0	1,5	dB
1452,00 ... 1492,00 MHz					
<b>Attenuation</b>	$\alpha$				
500,00 ... 1262,00 MHz		34,0	38,0	—	dB
1262,00 ... 1382,00 MHz		34,0	38,0	—	dB
1382,00 ... 1398,00 MHz		25,0	30,0	—	dB
1398,00 ... 1414,00 MHz		18,0	22,0	—	dB
1547,00 ... 1580,00 MHz		25,0	35,0	—	dB
1580,00 ... 2200,00 MHz		33,0	40,0	—	dB
<b>Group delay ripple (p-p)</b>	$\Delta\tau$				
Aperture 1 MHz	1452,00 ... 1492,00 MHz	—	10	—	ns



SAW Components

B1608

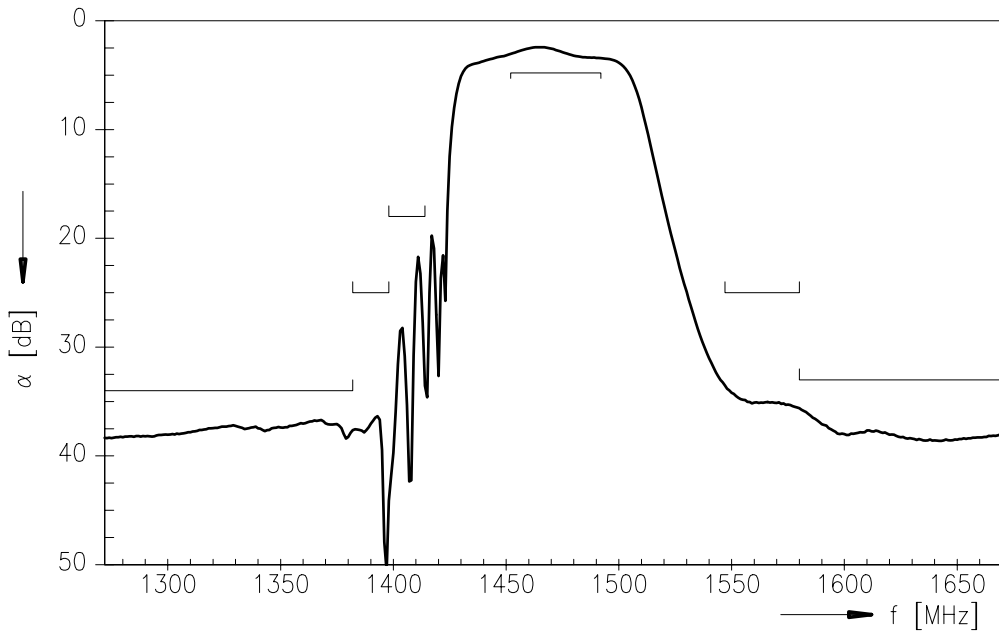
Low-Loss Filter

1472,0 MHz

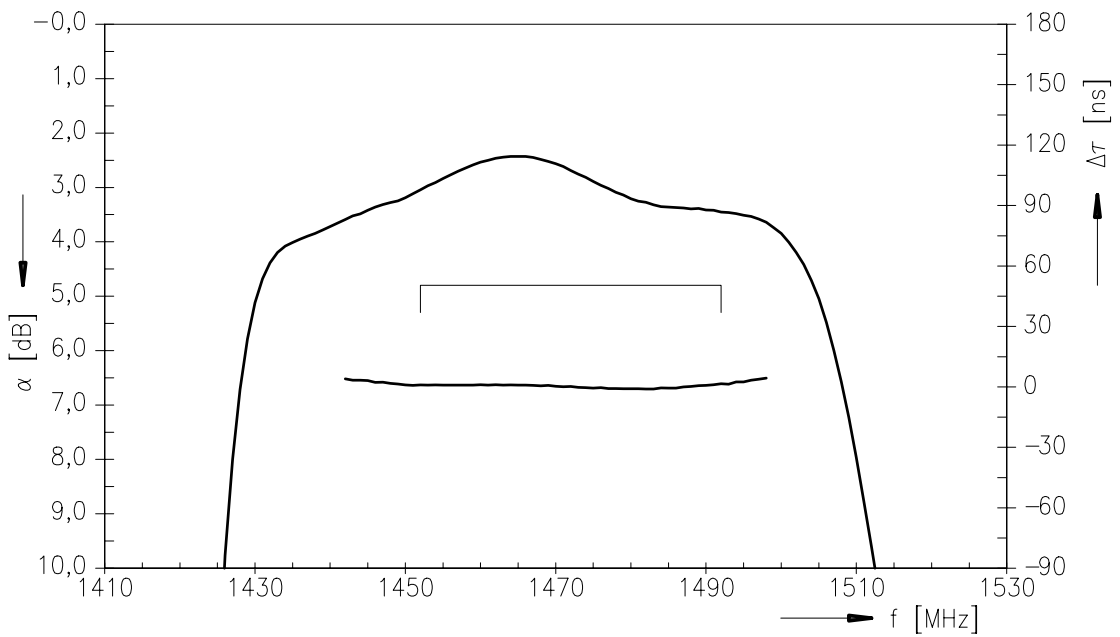
Data Sheet



Transfer function



Transfer function (passband)





SAW Components

B1608

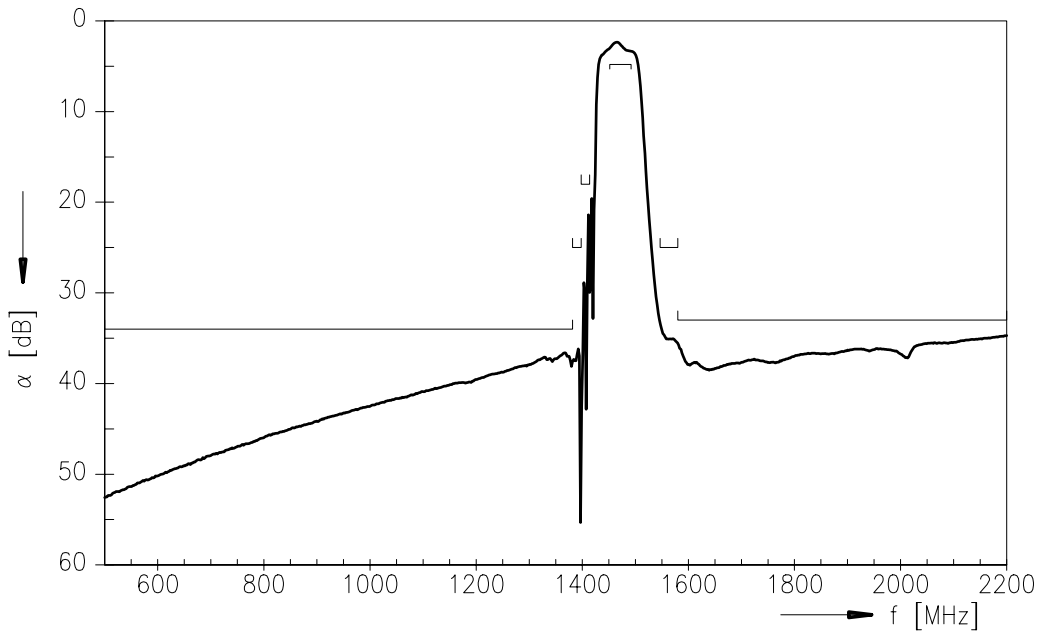
Low-Loss Filter

1472,0 MHz

Data Sheet



Transfer function (wideband)





**SAW Components**

**B1608**

**Low-Loss Filter**

**1472,0 MHz**

Data Sheet



**Published by EPCOS AG**

**Surface Acoustic Wave Components Division, SAW CE MM PD**

**P.O. Box 80 17 09, 81617 Munich, GERMANY**

© EPCOS AG 2002. Reproduction, publication and dissemination of this brochure and the information contained therein without EPCOS' prior express consent is prohibited.

Purchase orders are subject to the General Conditions for the Supply of Products and Services of the Electrical and Electronics Industry recommended by the ZVEI (German Electrical and Electronic Manufacturers' Association), unless otherwise agreed.

This brochure replaces the previous edition.

For questions on technology, prices and delivery please contact the Sales Offices of EPCOS AG or the international Representatives.

Due to technical requirements components may contain dangerous substances. For information on the type in question please also contact one of our Sales Offices.